

PROJECT 2WHEELS



Wheelchair users



Parents with babies



Blind users

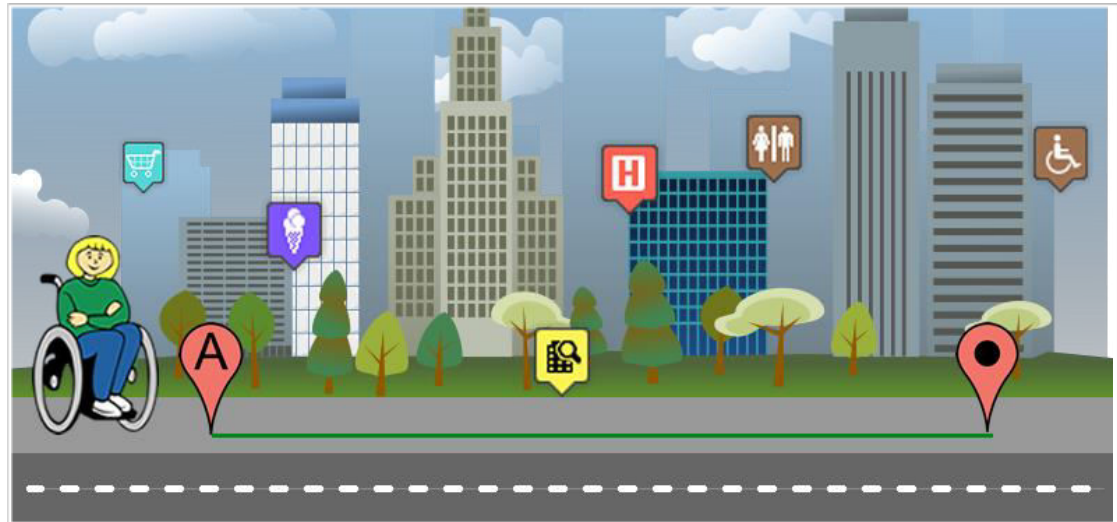


Elderly



Bicycles

THE ROUTE OF THE STUDENTS FROM HOME TO SCHOOL ACCESSIBLE AND SUITABLE FOR CYCLING



AN EXAMPLE OF SOCIAL INNOVATION

=Technology innovation (Mapability) + Social Pact: Students (USRP)
- Assessorship to Environment (City of Turin) - Rotary District 2031



Taking data on site

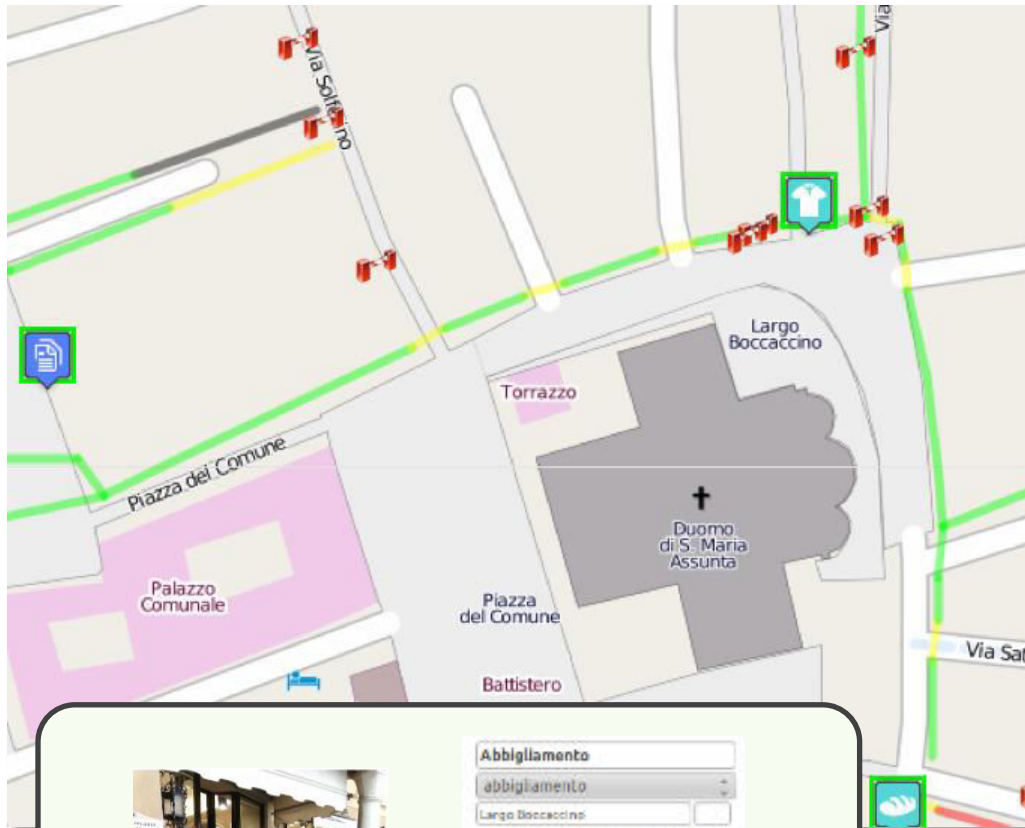
Geo-localized photographs

Online addition of parameters

Map creation

Crowdsourcing of geo-localized information regarding the accessibility and urban cycling on the home-school route

BENEFITS



- Identification of architectural barriers and accessible places
- Safety of pathways
- Accessible points of interest
- Cycling safety in urban itineraries
- Online map





Abbigliamento
abbigliamento

Largo Boccaccino

servizio pubblico / ufficio amministrativo

valutazioni di accessibilità:





ingresso gradino > 25 mm

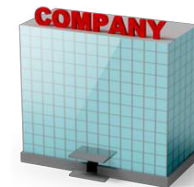
larghezza < 90 cm

note

aggiornato il xx/xx/xxxx
da
del

THE CONTEXT

- A city for all means a more livable city, even for able-bodied.
- Identifying architectural barriers on a digital map allows you to plan and design a smart city.



PROGETTO 2RUOTE

Il Percorso degli Studenti da casa a Scuola:
il loro e il nostro SPAZIO URBANO QUOTIDIANO

Il caso del Liceo Einstein di Torino

